



# Designing Academic Environments

LM Architectural Group | Environmental Space Planning



## About Us

**LMAG | ESP** is an **award winning multidisciplinary design office** based in Winnipeg, Manitoba. Originally founded in 1954, our portfolio covers a diverse range of both public and private sector work represented regionally, nationally and globally. We are driven and **committed to the development of exceptional environments** and welcome design challenges that provide **opportunities for discussion, collaboration and the creation of meaningful places.**

lm-architects.com

esp-intdesigners.com





## Our Work

Our work is a direct representation of the relationships we have with our Clients. **Our design process is client-focused, participatory, hands-on and collaborative.** We work hard to understand how you truly work and the more we understand your values, goals and objectives, the better we can tailor design solutions to meet your needs.

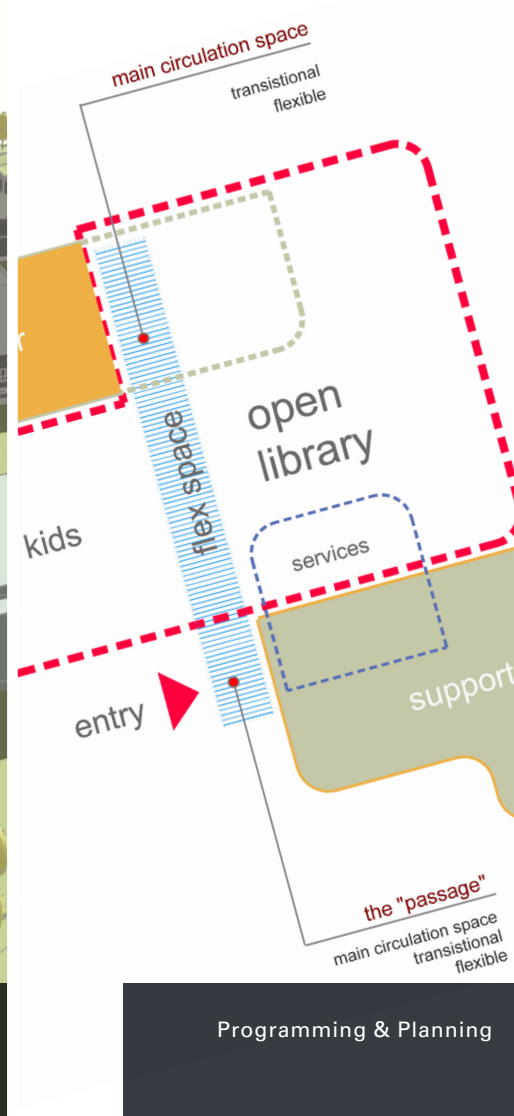
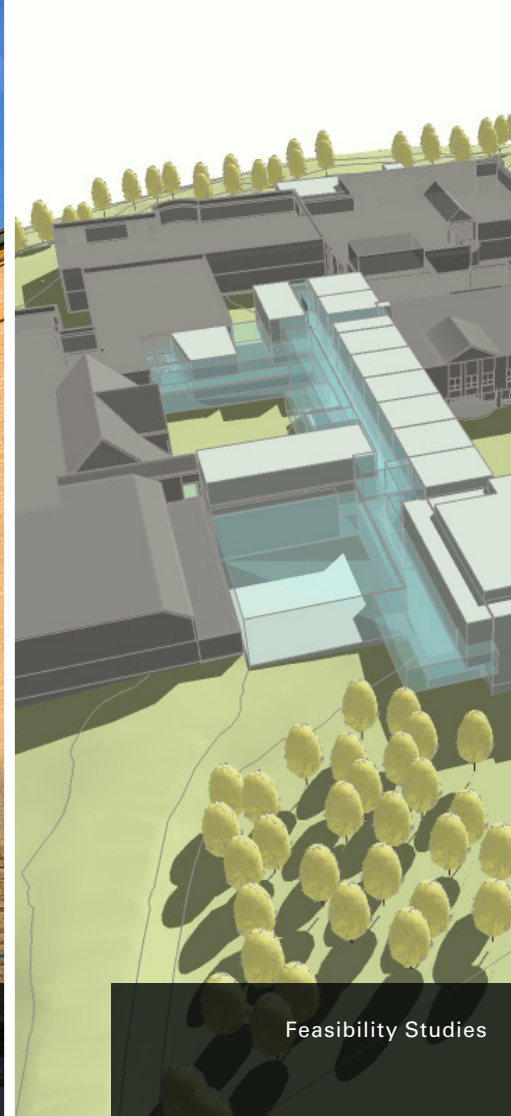
**Our role is to lead and facilitate.** The results of these efforts, we believe, are a thoughtful and creative response to each project, it's programme and physical environment.





## We Offer

A comprehensive range of architectural and interior design services, inclusive of:





## Our Focus

For over thirty years, **LMAG | ESP** has had the good fortune of working collaboratively with a number of school divisions and community groups covering a wide geographical area within Manitoba and North Western Ontario. We approach each project **guided by years of direct experience and driven by an enthusiasm of what can be explored and achieved** through an integrated design process.

We understand that today's students demand more from the environments in which they work and play. This means **providing well equipped, flexible and engaging spaces for students, faculty and the public** to prepare future generations for the realities and requirements of the working world.





## Waverley West New High School

*Winnipeg, MB*

The new Waverley West High School is part of an education and community recreation campus, currently in the planning stages for this affluent suburban neighbourhood, located in the southwest quadrant of Winnipeg. The high school shares a bus drop off and playing fields with a new elementary school and daycare that are also being developed by the Pembina Trails School Division. The school site is adjacent to and contiguous with property that the City of Winnipeg has identified for a future new community recreation centre to the south and the high school has been planned to physically connect to this important public amenity and to maximize opportunities to share resources.

The high school is planned around a large two storey Student Commons that connects the bus loop on the east side to the student and staff parking on the west. **The Commons also organizes the major “community” spaces of the school including the Library, MPR/Gym/Fitness suite, and Canteen while also providing strong connections to the other learning spaces within the school**, including an open feature stair that connects all three storeys of the classroom wing. It is **designed as an active learning and social hub** for the school and as an orientation device within this large community facility that will be open to the public for after hour events. The 4000 s.f. fully glazed, two storey Library which fronts the Commons, opens on to an exterior landscaped courtyard that is designed as both a passive social space or as an active outdoor learning classroom.

The compact plan organized around the Student Commons and exterior courtyard maximizes the site for other school related requirements, while ensuring that all learning spaces have access to natural light and views. The school is targeting LEED Silver certification and is to be tendered in the summer of 2021.









## École Waterford Springs K-8 School

Winnipeg, MB

As part of a provincial mandate to promptly and efficiently deliver a number of new school facilities across Manitoba, **this 76,400 s.f. K-8 facility provides new education, recreation and associated child care space** to one of the fastest growing neighbourhoods in Winnipeg. Planned for an initial enrollment of 600, but designed to accommodate up to 800 students, the new school forms part of an overall redevelopment of the area served by the western extent of Jefferson Avenue, anchoring this broader community precinct in NW Winnipeg. Oriented primarily east to west, the linear building is **organized into two distinct blocks that are connected by a large, two storey Student Commons space** that forms the heart of the school and defines the main entrance to the school. The one storey east block contains the major public and specialized education spaces, including the gym, MPR and library, while the two storey west block is organized around a courtyard and contains the administration suite, main classroom spaces and the daycare. **This “U” shaped two storey configuration creates four distinct education houses** that locates the daycare children and early years students on the main floor and the middle years students on the second floor.

Upon entering the building, the Commons opens up to the Outdoor Learning Classroom that was developed to raise awareness of indigenous culture and this theme continues into the Commons itself as well as other areas of the school. Working with the division's Indigenous consultant and developed as a “School as a Teaching Tool” components towards LEED Silver certification, **the emphasis on indigeneity was an important priority for the school division in terms of raising awareness of the history, culture and contributions of First Nations people** within what is largely a population of new or first generation Canadians.









## École Templeton New K-5 Dual Track School

*Winnipeg, MB*

As part of a Provincial mandate to promptly and efficiently deliver a number of new school facilities across Manitoba, **this 55,300 s.f. facility provides new education, recreation and associate child care space** to the fastest growing school division in the Province over the past decade. Planned for an initial enrollment of 450 but designed to accommodate up to 600 students, the new school forms part of an overall redevelopment of an existing site that will anchor a broader precinct community development in the Leila North Area. Oriented primarily east to west, the school entrance is framed and buffered by recreational and administrative space, providing an active visual connection to the drop off and pick up area, further to facilitating a completely south facing exterior play space for all ages. **Highlighted by double height academic commons and associated support space core, the school is organized into three ‘houses’, each containing five classrooms and related breakout space.** This approach reflects a divisional focus on providing a number of informal, project based areas throughout the school for both individual study and communal student interaction.









## Neepawa Middle School

*Neepawa, MB*

This major expansion to the existing regional high school involves the addition of a **new two storey, 35,000 s.f. Middle Years School, related renovations to the existing building and an associated 74 space standalone daycare facility.** Expanding west of the existing school, the new addition is specifically configured and sited to maintain exterior community play space and adds 10 classrooms, an art room and fully equipped band room further to supporting educational, recreational and administrative space. Entering from a new bus staging area below a continuous entrance canopy, students, staff and visitors are welcomed into a spacious foyer framed by the school library and administration suite. **The library is envisioned as a flexible learning space, opening onto the public corridor, MPR and gymnasium beyond, providing a suite of communal spaces** for academic and broader community use.









## Louis Riel Arts & Technology Centre

*Winnipeg, MB*

This project involved a partial redevelopment of the LRSD's Arts & Technology Centre to both relocate their existing Food Pastry Program and establish two new technical program offerings for Plumbing Trades and Broadcast/Online Media. The existing pastry classroom and kitchen area were internally relocated to the front of the facility to consolidate the Culinary Arts Program and **spaces were expanded in floor area and fitted out with new state-of-the-art equipment** to facilitate student initiatives. Said relocation prompted the opportunity to develop a new open and flexible Plumbing Program Classroom, **designed with enhanced lighting, durable wall and floor finishes** and a new hoist beam accommodating 1:1 mockup units for hands-on use by students to practice and hone their trade.

On the Upper floor, three smaller classroom spaces were extensively renovated to create a **new Broadcast & Online Media Studio** that includes a full classroom area, **acoustically contained** and separated from a new control booth, media and **sound studio**. A program highlight is the new 'green screen' wall complete with 4' ceiling track pipe grid for flexible positioning of various media lighting to suit a range of live student broadcasts.









## Donald Young School Redevelopment

*Emo, ON*

This comprehensive revamping of the existing 26,880 s.f. facility is in the final stages of a 3 Phase, multi-year renewal project. Phase 1 involved the addition of a new 15,560 s.f. classroom/administration wing comprised of five new classrooms, an early learning suite, special education and resource facilities, administration and related ancillary service and support space. Beyond **providing expanded and updated educational space, the new addition defines a new 'front door' for this community school, highlighted by a new 'Academic Commons' framed by a fully glazed, visually expansive library space.** Phase 2, currently in construction, will see extensive interior and exterior renovations completed to the remaining gymnasium/classroom school wing and associated site development addressed, with completion scheduled for the fall term in 2018. The final Phase proceeded in early 2020 and sees a 49 space community daycare facility added to this community campus. Related play space, sports field and overall site development will complete and compliment the overall scope of work.



**Scope:** 30,820 s.f. | **Completed:** 2017 (Phase 1), 2019 (Phase 2), 2021 (Phase 3) | **Client:** Rainy River District School Board







## École Laura Secord School Gymnasium Addition

*Winnipeg, MB*

The project involved a major building addition of a new gymnasium and related support facilities to an iconic, heritage listed school facility located in the heart of the Wolseley neighbourhood of Winnipeg. To both **address and preserve** the stature of the existing 1913 school structure, and **to avoid costly building code upgrades**, the new addition was strategically separated and connected via an expansive glazed, linking walkway at the second floor.

The **positioning, scale and massing** of the 'new' minimizes it's physical and visual impact on the 'old', and creates a sheltered exterior courtyard, extending and engaging the existing hard-surfaced playground beyond. Our Backyard, a community fundraising initiative, will serve to ensure that this associated outdoor play space is fully developed for both recreational and educational use by all.



**Scope:** 11,700 s.f. | **Completed:** 2017 (August) | **Client:** Winnipeg School Division







## Private School Study

*Winnipeg, MB*

In 2009, LMAG was retained by a local private school to guide and assist in the realization of a **Comprehensive School Master Plan** set forth by the Campus Plan Oversight Committee and the Board of Governors. The project consisted of conceptual planning, pre-design, design development and the eventual phased construction of five major components:

- **An expanded and fully renovated Senior School**
- **Redeveloped and expanded Administration facilities**
- **A new 100 bed Student Residence**
- **A new Theatre Complex for the Performing Arts**
- **A new Campus Fitness Centre**

Targeting LEED Silver Certification as a performance minimum, the project implemented a Construction Management delivery model deployed via an **in depth Integrated Design Process (IDP)** involving an extensive project team of professionals and project stakeholders in all discussions. Following the completion of pre-design work, inclusive of intensive design workshops, user group/roundtable discussions and community consultation, selection of a preferred approach for implementation of the Campus Master Plan was made.









## Open Roads Elementary School

*Dryden, ON*

Initiated by the Keewatin Patricia District School Board (KPDSB), this EL-8 school replaces and consolidates three existing older school buildings in the Dryden, Ontario area. Located on the site of one of the recently closed schools, the new facility was planned to maintain continuity of school operation during construction and facilitate transition from old to new.

The school is specifically **designed around a centrally located two storey student 'commons' which anchors and establishes east and west wings for the primary and middle years students**. Physically and visually connected, **the commons acts as the social and educational hub**, adjacent to the main activity areas of the school (ie. gym, drama room and library) as well as the general office to ensure proper supervision.

With **location, context and policy as prominent influences**, a commitment to sustainable design was paramount. Strategies were implemented to enhance building performance, instill durability of systems and ensure the school's integration within the adjacent neighbourhood and community as a whole.









## St. Theresa Point School

*St. Theresa Point, MB*

Forming Phase 2 of the development of educational and teacherage facilities in the Community of St. Theresa Point First Nation, **the project involved a new middle year's school, an addition to the existing high school, additional staff housing and related site development.** As Associate Architect, LMAG was directly responsible for the design and contract documents of the Middle Year's School and participated in the contract administration during construction.

The new middle school is carefully sited to respond to both the existing Phase 1 development and overall rugged topography of the region. The **splayed footprint organizes the plan into two distinct wings, with the 'hinge point' defined by a vaulted two storey student commons.** Framed by a mosaic of red, black, yellow and white panels representing the four nations of the Earth, carefully composed fenestration provide patterns of dappled light and panoramic views of the forest canopy beyond.

*In collaboration with NumberTEN Architectural Group*

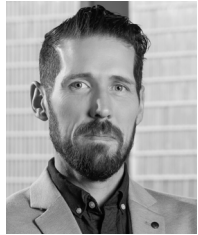


**Scope:** 20,490 s.f. | **Completed:** 2012 | **Client:** St. Theresa Point Education Authority









**Jon Trenholm**, MAA, MRAIC, LEED AP BD+C, ALE  
Principal

LM Architectural Group  
T: **204.942.0681**  
jtrenholm@lm-architects.com



**Shelly Slobodzian**, BID, PIDIM, IDC, NCIDQ, ALE  
Principal

Environmental Space Planning  
T: **204.944.9292**  
sslobodzian@esp-intdesigners.com



**Terry Danelley**, FRAIC, MAA  
Senior Advisor

LM Architectural Group  
T: **204.942.0681**  
tdanelley@lm-architects.com





LM Architectural Group

500-136 Market Avenue  
Winnipeg, MB R3B0P4  
T: **204.942.0681**

Environmental Space Planning

500-136 Market Avenue  
Winnipeg, MB R3B0P4  
T: **204.944.9292**